

## Alzheimer Disease & Down Syndrome: A Brief Overview

Paul TE Cusack\*

23 Park Ave, Saint John, NB E2J 1R2, Canada

\*Corresponding author: Paul TE Cusack, BScE, 23 Park Ave, Saint John, NB E2J 1R2, Canada, Tel: 5066526350; E-mail: [cusackpaul8@gmail.com](mailto:cusackpaul8@gmail.com)

Received: May 23, 2025; Accepted: June 24, 2025; Published: June 30, 2025

### Abstract

In this paper, we collect the latest paper by this author on AD, DS, DS, Mosaic DS, Grave's, Low Blood Pressure, HSV.

### 1. Introduction

I have written a lot of papers on Dementia and Alzheimer Disease. My mother has the disease. I have Schizophrenia which gives me a 25 times more likely hood of having dementia. Since my mother has AD, I am 3 times more likely to have AD. Therefore, I have 75 times more likelihood of having AD.

I also recently discovered that I have Mosaic Down Syndrome. I have a a large head and the solitary crease across my palms.

My IQ was tested when I was 28. I scored in the 98<sup>th</sup> percentile in all categories except for auditory memory where I scored in the 50<sup>th</sup> percentile. That brought m y IQ down from the genius level (98) to high average (89)

My niece was in French Immersion for grade 1. She had strawberries on her shoulder when she was born (HSV). She was catching on to the second language, so they had her tested. Her hearing was intermittent. A common relative to the both of us is my mother, her grandmother. My mother has Grave's Disease which is hypothyroidism is caused by low Iodine. It affects the immune system. Of course, DS is an autoimmune system disease.

I live with a fellow who has DS. He has the mind of a 3-year-old. He has a bad case of the HSV-1. His ears are noticeably sensitive to loud sounds.

**Citation:** Cusack PTE. Alzheimer Disease & Down Syndrome: A Brief Overview. J Anxiety Depress. 2025;8(1):175.

©2025 Yumed Text.

Patients with DS are guaranteed to develop AD. Hearing loss has been connected to AD.

The first clue that I had Mosaic DS was when I saw a photograph of a person with it. I noticed that it looked remarkably like my paternal cousin. He has a large head as well. His father and my father were schizoid. They were both odd people. Their mother, my paternal grandmother had cholera before they were born. She had 9 post cholera children ( $2/9=0.222$ ). Another of my cousins from the same father has low blood pressure like me and niece. We all faint when we give a blood sample.

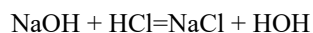
So, they are all connected: AD, DS, Hearing Loss. I've written papers that AD is caused by the HSV. Other researchers have picked up on it. I also have Sz. We experience a ringing in the ears which may be caused by a vitamin deficiency, Niacin (Vitamin B3) and all the B vitamins. These diseases may be dietary as well as genetic. Sz is caused by Iron and Calcium and Salt; it's in the water we drink. We need sunlight Vitamin D to absorb Calcium.

I think if we pay more attention to what we consume, we would be able to ward off certain debilitating diseases. Also studying basic viruses, bacteria, and fungi may lead to unexpected cures. We also need to watch the chemical we are putting into the air. I live in a city with a large oil refinery, two oil fired power plants, and a pulp mill. They belch out chemicals that most certainly have an effect on humans.

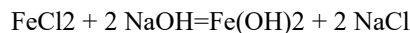
Lysine, and amino acid in nuts and beer, causes HSV-1 to grow. It is a precursor to the beta amyloid plaque found in the brains of Alzheimer patients.

My mother was also lactose intolerant. Lactose is two glucoses attached by an oxygen.

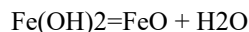
Here are the basic reactions that govern SZ and AD:



$$T = e^M = e^{(40.00 + 36.46 \times 6.022)} = 99,925$$



$$t = e^M = e^{(206.75 \times 6.022)} = 113.25$$



$$dM = 113.25 - 99.25 = 55.695 = \text{Fe} + 2e^- = \text{FeO} \quad \text{Fe is a catalyst}$$

$$55.695 - 55.845 = 1.5 = dM = t$$

$$t^2 - t - 1 = E = -0.25 \rightarrow \text{Catalyst GMP}$$

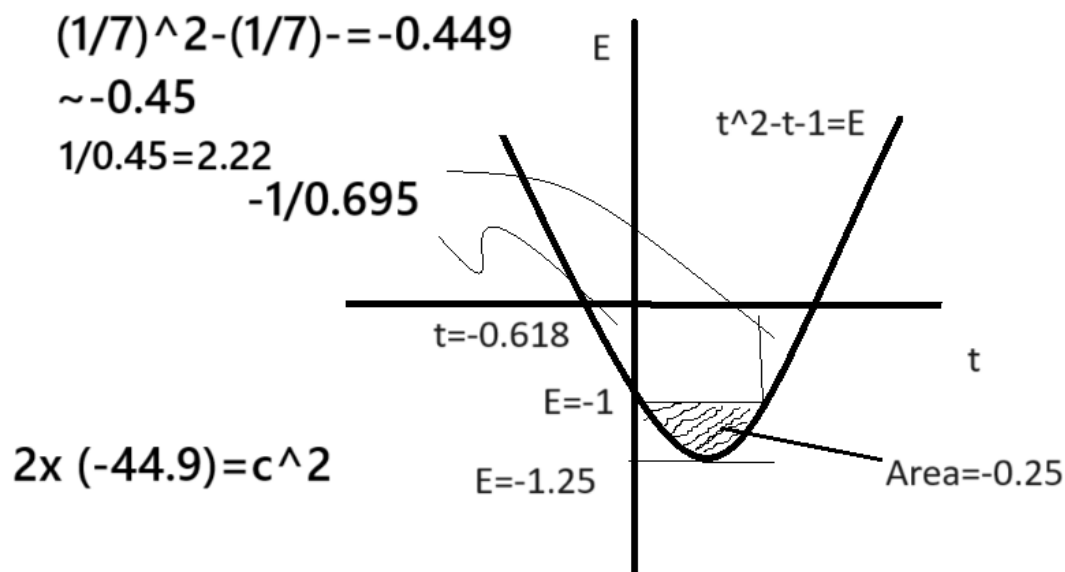


FIG. 1. **Golden Mean Parabola (GMP).**

I live in a special care home. My roommate has Down Syndrome. I noticed that he had a bad case of oral harpies. Patients with DS are guaranteed to get AD. Patients with SZ are 25 x's more likely to get AD.

After putting it all together, I realized that beta amyloid is caused by an immune response to a chronic infection that lives in the trigeminal nerve. When exposed to lysine in beer, or under a lot of stress, or sit in the sun (which is essential to get your calcium), the herpes would be acute. Anyway, here is the solution to the never-ending problems of AD, SZ and DS.

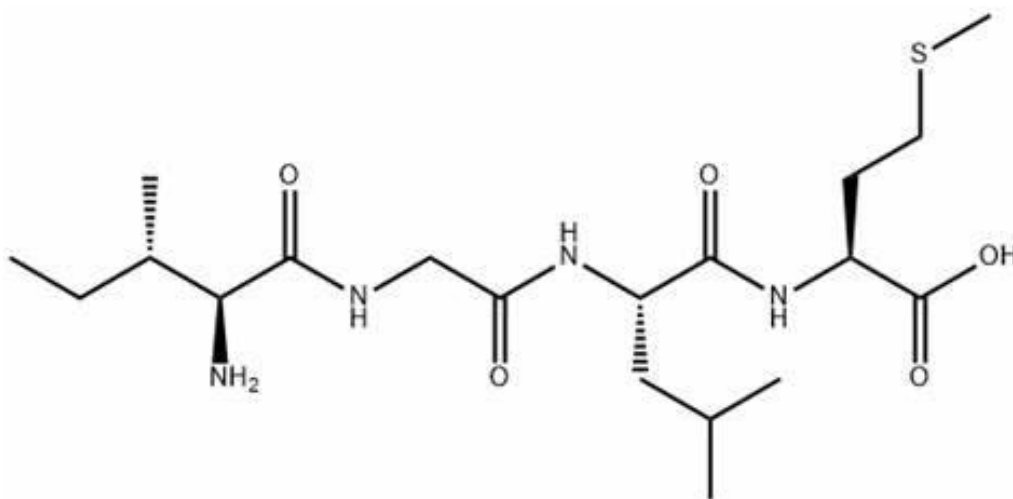
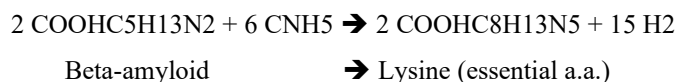


FIG. 2. **Beta Amyloid protein plaque found in AD patients.**

It has been noticed since 2007 that Beta Amyloid is caused by Genital and Oral herpes.

**Herpes simplex virus infection causes cellular beta-amyloid accumulation and secretase upregulation.** Neurosci Lett. 2007 Dec 18;429 (2-3):95-100. PubMed. Rouleau N, Cantley WL, Liaudanskaya V, Berk A, Du C, Rusk W, Peirent E, Koester C, Nieland TJ, Kaplan DL.



The general function of norepinephrine is to mobilize the brain and body for action. Norepinephrine release is lowest during sleep, rises during wakefulness, and reaches much higher levels during situations of stress or danger, in the so-called fight-or-flight response. In the brain, norepinephrine increases arousal and alertness, promotes vigilance, enhances formation and retrieval of memory, and focuses attention; it also increases restlessness and anxiety. Source: Wikipedia

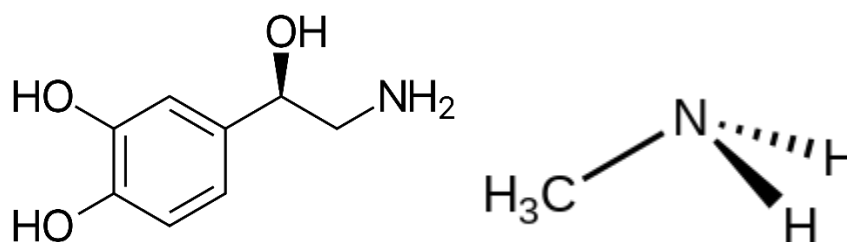


FIG. 3. (a) Norepinephrine Note: (H<sub>2</sub>O<sub>2</sub>) 2 (b) Methylamine.

Stress is known to trigger SZ.

Lysine from beer and nuts is an essential amino acid. It is known to aggravate HSV-1. Also, sitting in the sun or UV rays also contributes to outbreaks of HSV-1. The Ultraviolet rays stimulate the Lysine a-Beata Amyloid reaction.

Herein is a brief paper outline some future research areas that may be of interest to researchers in neurological disorders including Alzheimer Disease, Down Syndrome, and Schizophrenia. It appears that STD's (HSV-1, Genital Herpes, and Gonorrhea) are the culprits.

I present a theory worth investigating as to the cause of Alzheimer Disease; Down Syndrome (and Mosaic DS); Schizophrenia.

The rates of occurrence show that a cause of **DS** is not a random mutation of cell division yielding 3 X chromosomes, but from a mother who has **genetical harpies**. The rate of genetical harpies is 1 in 6.

For **SZ**, the rate in the population is 1.1% - 2.2%. Patients with DS also may have HSV-1. HSV-1 is 80% (77.8%) of the population. **Gonorrhea** is a bacterium that leads to SZ. There is a 90% chance that a person will be infected in unprotected intercourse.

If a mother has genetical harpies, there is a 22% (2/9) chance her offspring will have SZ if the mother has genital herpes.

The reason AD is twice as common in women than men is that women who have DS offspring have 3 X chromosomes whereas Men only have one.

It can be shown using AT Math that Beta Amyloid buildup in the nervous system is caused by Herpes (Oral and Genital) which leads to AD and dS.

## 2. Introduction

A patient had Grave Disease and AD. She also had partial glaucoma in pone eye. DYS 391=12 is the Jewish Haplogroup J. It has a frequency of 1.3222%. The Irish have DYS391=10 in 67% of that population.

## Iodopropane

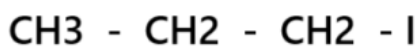


FIG. 4. Organic molecule.

$$172.00 \text{ g/mol} \times 6.022 = 1035.784$$

$$t = e^M = e^{0.1035} = 11091 \approx 111 \Rightarrow \text{Beta amyloid}$$

$$-1.09 \times 1.3222\% (\text{DYS 391 freq}) = 1 / \ln 2 = 1/M = c^2$$

$$1.602/11091 = 1/\ln 2$$

Gonorrhea causes glaucoma when a baby is exposed to the bacterium during the birthing process.

Gonorrhea

0.9% Female 0.7% male

$$\text{Avg} = 0.8\%$$

$$t = 90\%$$

$$0.90^2 - 0.90 - 1 = -1.09$$

$$t = 11091 = 1 + E$$

$$t=1+1/t$$

$$t^2-t-1=0 \quad \text{GMP}$$

$$1-E=t^2-t-1$$

$$t^3-t^2-1=0$$

$$0.16 \times 1.3222=472$$

$$0.84 \times 1.3222=1110684$$

$$t^2=t$$

$$t=1$$

$$t=t=1+1/t$$

$$t^2-t-1=0$$

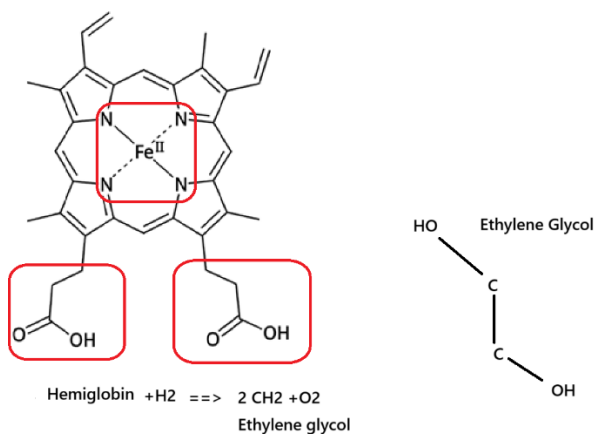
$$t=0.16$$

$$t^3-t^2-1=0$$

$$0.16^3-0.16^2-1=-1.1341$$

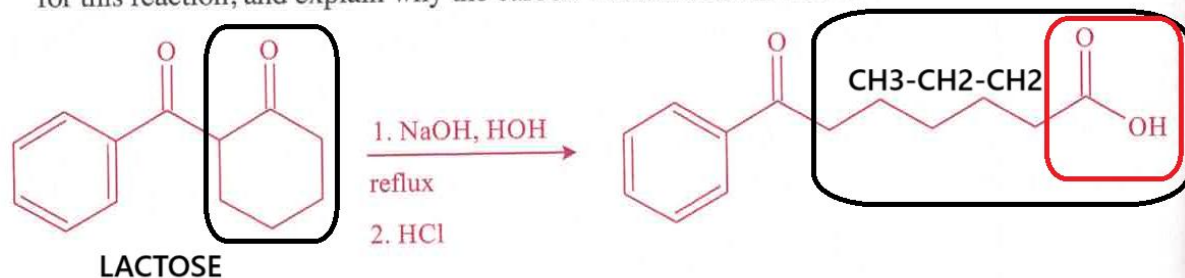
$$0.84^3-0.84^2-1=-1.1341$$

$$0.84 \times 1.3222=1.110684 \approx 1.11$$



There are patients who have Grave Disease and are Lactose intolerant who develop Alzheimer Disease.

2. If a beta-diketone, such as the one below, were heated with a concentrated solution of NaOH in water, the indicated ketoacid would be formed. Draw a reasonable arrow-pushing mechanism for this reaction, and explain why the carbon-carbon bond is cleaved.



## Iodopropane

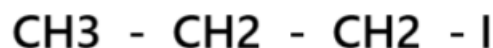
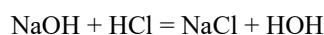


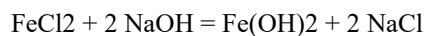
FIG. 2 Iodopropane is a component of Beta Amyloid plaque found in the brains of patients with AD.

Grave Disease is a disease of the immune system. As we have shown, the immune system responds to the chronic HSC infections.

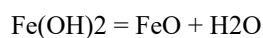
Here are the basic reactions that govern SZ and AD:



$$T = e^M = e^{(40.00 + 36.46 \times 6.022)} = 99,925$$



$$t = e^M = e^{(206.75 \times 6.022)} = 113.25$$



$$dM = 113.25 - 99.25 = 55.695 = \text{Fe} + 2e^- = \text{FeO} \quad \text{Fe is a catalyst}$$

$$55.695 - 55.845 = 1.5 = dM = t$$

$$t^2 - t - 1 = E = -0.25 \rightarrow \text{Catalyst GMP}$$

### 3. Conclusion

So, this is the causal link between Grave Disease and AD. Partial glaucoma is caused by the Gonorrhea bacterium which may be contracted at birth.

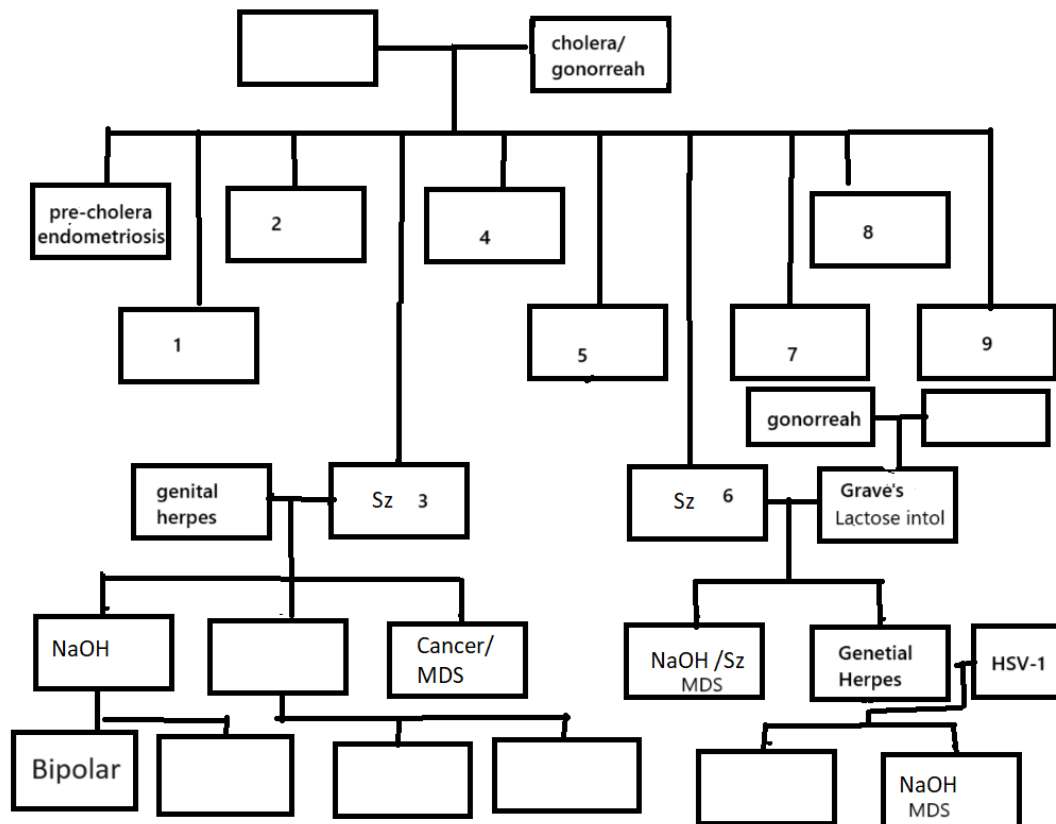


FIG. 5. Family Tree.

### REFERENCES

1. [The Association Between Thyroid Diseases and Alzheimer's Disease in a National Health Screening Cohort in Korea - PMC \(nih.gov\)](#)
2. Cusack PTE. Cancer and Alzheimer's: Carboxylic Acid, chlorine, and Iron.